

**SPEAKER SYSTEMS
MYTEK SERIES**



**SPEAKER SYSTEMS
MYTEK SERIES**

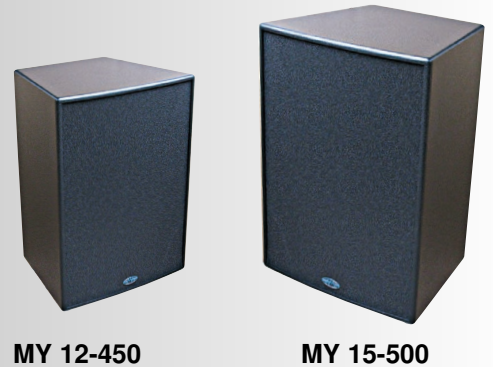
**MYTEK 12-450
MYTEK 15-600**

A 12" or 15" Neodymium driver is passively crossed over to a 1" horn mounted compression driver and represents the entry level to the Mytek series. Carefully selected drivers in conjunction with an optimally tuned cabinet and a two way crossover ensures exceptional vocal clarity and an impressive bass response, despite the small lightweight enclosures. These full range, black anthracite painted speakers have a full-length foam covered metal grill and hidden recessed handles. Speaker mounting is via a 35mm top hat.

MYTEK 12-450
Power handling is up to 450 Watts
Impedance is 8 ohms.
Weight 18Kgs
Dimensions:- 590H X 400W X 380D



MYTEK 15-500
Power handling is up to 500 Watts
Impedance is 8 ohms.
Weight 27Kgs
Dimensions:- 650H X 480W X 380D



MY 12-450

MY 15-500

The Mytek series of loudspeaker systems has been the result of extensive research into customer requirements. Customers expectations of the new range were high and the list of requirements was to include the following:-

- * Compact and light weight cabinets painted in black anthracite textured paint
- * Hidden handles and full length foam covered metal grills to ensure aesthetics appropriate for mobile or install.
- * Separate subs for enhanced low frequency response and dual drivers for maximum cone area and optimum 4 ohm loading
- * High efficiency trapezoidal mid high cabinets for maximum vocal definition and crystal clear highs
- * Three way passive crossover system for improved acoustic performance
- * High power to size ratio to provide a big sound from the smallest possible enclosures
- * Power handling throughout the range should accommodate amplifiers as small as 250 watts per channel to 1200 watts per channel
- * The Mytek 215 system should be fitted with a passive xover for 1200 watts per channel. Alternative drivers for bi amp application for 2000 watts per channel application to be optional
- * A full range of covers should also be available for the mobile users as optional extras.

MYTEK 208 SYSTEM

The smallest Mytek system comprises of an extremely compact painted sub cabinet with 2 x 8" bass drivers and a built in passive crossover. Mid /Hi sound distribution is via an 8" driver and HF horn, mounted into a separate trapezoidal painted cabinet. This truly outstanding combination provides good vocal clarity and a bass response superior to most 12" subs twice the size. System power handling is 450 Watts per side. (Total 800 W) System Impedance is 4 ohms.

Dimensions:- 420H X 260W X 250D Weight 8.5 Kgs
Dimensions:- 540H X 260W X 390D Weight 15.7 Kgs



MYTEK 210 SYSTEM

The most popular Mytek system comprises of a compact, painted, birch ply sub cabinet with 2 x 10" bass drivers and a built in passive crossover. Mid /Hi sound distribution is via an 8" driver and HF horn, mounted into a separate trapezoidal painted cabinet. This truly outstanding combination provides good vocal clarity and a bass response superior to most 15" subs twice the size. System power handling is 650 Watts per side. (Total 1.3KW) System Impedance is 4 ohms.

Dimensions:- 420H X 290W X 250D Weight 8.5Kgs
Dimensions:- 635H X 303W X 465D Weight 24.6Kgs



MY 215

MY 212

MY 210

MY 208

MY 208

MY 210

MY 212

MY 215



MYTEK 212 SYSTEM

This vocally precise Mytek system comprises of a compact, painted, birch ply sub cabinet with 2 x 12" Neodymium bass drivers and a built in passive crossover. Mid /Hi sound distribution is via a 10" driver and a horn loaded, compression driver mounted in a separate trapezoidal cabinet. This combination effortlessly mimics the Mytek 210 system, but with an even more impressive response and sound pressure level. System power handling is 1000 Watts per side. (Total 2.0 KW). System Impedance is 4 ohms.

Dimensions:- 505H X 340W X 320D Weight 15.8Kgs
Dimensions:- 740H X 353W X 520D Weight 27.6Kgs



MYTEK 215 SYSTEM

The most awesome Mytek system comprises of a compact, painted, birch ply sub cabinet with 2 x 15" Neodymium bass drivers and a built in passive crossover. The Mid/ Hi enclosure houses a 12" mid / hi driver passively crossed over @ 1k6Hz to a 1.5" horn loaded compression driver. Also available for bi amp use with higher powered drivers. Ring for more information for bi amp applications.

Dimensions:- 590H X 400W X 380D Weight 23Kgs
Dimensions:- 840H X 490W X 565D Weight 38Kgs



SPEAKER SYSTEMS



SPEAKER SYSTEMS



PS15/450



PS12/400



PS10/350



PS8/100



PS/15 AND PS/12 BACK

SPEAKERS - (PAINTED)

This McGregor range of speaker cabinets represents exceptional value, providing excellent results with both music and vocal material. Clear transparent highs and well defined vocals are combined with clean punchy bass to give these cabinets an acoustic superiority over many similar looking products. Carefully tuned cabinets and well designed covers provide this range with their sonic superiority

All cabinets within this range are trapezoidal shaped and are painted with a black texturised paint. All cabinets have a standard 8 ohm impedance.

Tilt and swivel brackets for wall mounting are available as accessories for the PS8 and PS10 however the PS12 and PS15 are fitted with 35mm top hats

MODEL	H X W X D - MM	WEIGHT	CONFIGURATION	POWER	XOVER	RESPONSE	SPL	CONNECTORS
PS8/100P	420 X 290 X 250	8Kgs	8" & HORN	100 W	3K5Hz 12dB	70Hz - 20KHz	95dB	JACK & TERMINAL
PS10/350P	505 X 340 X 320	14Kgs	10" & HORN	350 W	3K5Hz 12dB	75Hz - 20KHz	97dB	SPEAKON & JACK

MODEL	H X W X D - MM	WEIGHT	CONFIGURATION	POWER	XOVER	RESPONSE	SPL	CONNECTORS
PS12/400	590 X 400 X 380	18Kgs	12" & HORN	400 W	2K5Hz 12dB	63Hz - 20KHz	97dB	SPEAKON & JACK
PS15/450	650 X 480 X 380	27Kgs	15" & HORN	450 W	2K5Hz 12dB	58Hz - 20KHz	98dB	SPEAKON & JACK

BASS CABINETS - (PAINTED)

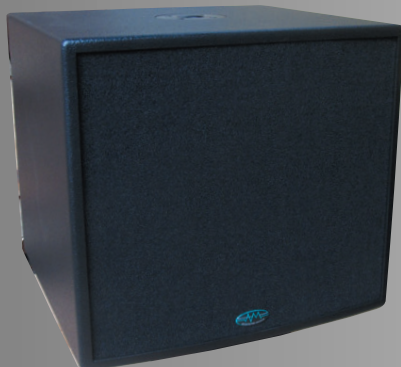
Bass cabinets can be used with full range enclosures to extend bass response and increase low frequency sound pressure.

Two way crossovers are fitted as standard. The crossover allows parallel connection (4 ohm load) or a two way crossover configuration (8 ohm load) .

Simply connect the additional speaker to the correct terminals on the link speakon as instructed on the rear speaker terminal plate.

PRO12, best with PS and MY series 10s and 12s. PRO15, best with PS and MY series 12s. Pro18, best with MY12-MH. Select for application and budget.

MODEL	H X W X D - MM	IMP	WEIGHT	DRIVERS	POWER	XOVER	SPL	RESPONSE	CONNECTORS
PRO12/450	391 X 436 X 468	8 ohm	20Kgs	12"	450W	150HZ	97dB	50Hz - 400Hz	SPEAKON
PRO12/500N	391 X 436 X 468	8 ohm	20Kgs	12" Neo	500W	150Hz	99dB	50Hz - 400Hz	SPEAKON
PRO15/500	480 X 536 X 508	8 ohm	24Kgs	15"	500W	150Hz	98dB	45Hz - 400Hz	SPEAKON
PRO15/600N	480 X 536 X 508	8 ohm	25Kgs	15" Neo	600W	150Hz	99dB	45Hz - 400Hz	SPEAKON
PRO18/800	600 X 700 X 530	4 ohm	36Kgs	18"	800W	ACTIVE	98dB	40Hz - 350Hz	SPEAKON



PRO15 SUB



PS12/400



PRO12 SUB



PS10/350